

File Name: Company Bulk Tape Specification.doc  
File Location:  
Issued By:  
Reviewed By:  
Submitted To:  
Version No.: 4.4

## **Company Bulk Tape Specification Document**

Version	Date	Resp	Reason for Change
3.0	03.03.2003	RW	Latest Specification for Bulk Tape – information on previous releases removed from document to avoid confusion.
3.1	14.04.2003	RW	Last accounts date added to end of CS record
3.2	08.07.2004	RW	Relationship type code field has been added to end of record types: CO – Dire/Sec, LR-Liquidator, EX-Examiner, RC-Receiver  The relationship type code list has been added to the bulk tape reference file as record typ 'RT'  Fix for missing data in charge type description field on the CH Record completed. The full charge type description as in the company printout, will now appear for all charges in the same record and field as before Note, this field can now be quite large up to 4000 (in theory), 1000 (in practice)
3.3	28/09/2005	RW	Added “Satisfaction Status “ field at end of Satisfaction record
3.4	13/01/2005	RW	Added “Accounts to Date” field at end of Document Record Added field “Company Status Date” at end of Company record (CS)  Added field “Person Address Line 5” at end of Director / Secretary record (CO)
3.5	01/07/2010	SM	Added Registered Date to Document Record (DR) Added Authorised Person details for a company (AP)
3.6	01/06/2013	AM	Added the Auditor Registration Number field (DR) Added Sub Num, Further Particulars Ind & Interest Ind (CH) Added Sub Num field (SR)
4.0	10/09/2014	TW	Changes as outlined in the Amendments List on page 16
4.1	20/08/2015	LS	Changed field description “Amount Secured Desc” within (CH) Charge table to “Amount Secured Details” to reflect the additional data being provided in relation to amount secured information
4.2	24/09/2015	LS	Change field ‘Charge_Party_Name’ in PE (Person Entitled) from 130 to 150 Characters
4.3	16/02/2016	LS	Added Company_Name_Eff_Date field (CS)
4.3	16/02/2016	LS	Added Company_Type_Eff_Date field (CS)
4.4	19/08/2020	TOC	

Version	Date	Resp	Reason for Change
4.4	19/08/2020	TOC	<p>Company_Name Size extended (CS)  Company_Keyword_1 25 Char (CS)  Company_Status_Code Size extended (CS)  Company_Type_Code Size extended (CS)  Princ_Object_Code Size extended (CS)  Company_Address_1 Size extended (CS)  Company_Address_2 Size extended (CS)  Company_Address_3 Size extended (CS)  Company_Address_4 Size extended (CS)  Town_Code_Number Size extended (CS)  Roa_id Size extended (CS)</p> <p>Authorised_Amount Size extended (CC)  Amount_Issued Size extended (CC)</p> <p>Company_Previous_Name Size extended (CN)  Previous_Name_Keyword_1 25 Char (CN)</p> <p>Person_Name Size extended (CO))  Person_Address_1 Size extended (CO)  Person_Address_2 Size extended (CO)  Person_Address_3 Size extended (CO)  Person_Address_4 Size extended (CO)  Rel_Type_Code Size extended (CO)  Person_Address_5 will not be populated (CO)</p> <p>Currency_Code Not being populated (CH)  Charge_Status_Code Size extended (CH)  Sub_Num type changed from Number to Char (CH)</p> <p>Charge_Rel_Type_Code Size extended (PE)  Charge_Party_Name Size extended (PE)  Charge_Party_addr_1 Size extended (PE)  Charge_Party_addr_2 Size extended (PE)  Charge_Party_addr_3 Size extended (PE)  Charge_Party_addr_4 Size extended (PE)</p> <p>Property_Num Not being populated (PP)</p> <p>Satisfaction_Notes Not being populated (SR)</p> <p>Liquidator_Name Size extended (LR)  Liquidator_Addr_1 Size extended (LR)  Liquidator_Addr_2 Size extended (LR)  Liquidator_Addr_3 Size extended (LR)  Liquidator_Addr_4 Size extended (LR)  Rel_Type_Code Size extended (LR)</p>

Version	Date	Resp	Reason for Change
4.4	08/02/2022	DK	<p>Examiner_Name Size extended (EX)  Examiner_Addr_1 Size extended (EX)  Examiner_Addr_2 Size extended (EX)  Examiner_Addr_3 Size extended (EX)  Examiner_Addr_4 Size extended (EX)  Rel_Type_Code Size extended (EX)</p> <p>Receiver_Name Size extended (RC)  Receiver_Addr_1 Size extended (RC)  Receiver_Addr_2 Size extended (RC)  Receiver_Addr_3 Size extended (RC)  Receiver_Addr_4 Size extended (RC)  Rel_Type_Code Size extended (RC)</p> <p>Authorised_Person_Name Size extended (AP)  Authorised_Person_Addr_1 Size extended (AP)  Authorised_Person_Addr_2 Size extended (AP)  Authorised_Person_Addr_3 Size extended (AP)  Authorised_Person_Addr_4 Size extended (AP)  Rel_Type_Code Size extended (AP)</p> <p>Sub_Document_Num Size extended (DR)  Submission_Type_Code Size extended (DR)  Document_Type_Code Size extended (DR)  Submission Status Size extended (DR)</p> <p>Company_Name Size extended (RL)  Company_Address_1 Size extended (RL)  Company_Address_2 Size extended (RL)  Company_Address_3 Size extended (RL)  Company_Address_4 Size extended (RL)  Company_Address_r Size extended (RL)  Rel_Type_Code Size extended (RL)</p> <p>Sub_Num type changed from Number to Char (SR)</p> <p>Sub_Num Size extended (CH)  Sub_Num Size extended (SR)  Submission_Num Size extended (DR)  Satisfaction_Num Size extended (SR)  Satisfaction_Num Size extended (PR)</p>

## 1. Introduction

This document is a specification of the data format for the bulk tape supplied by the CRO to customers. This specification is the same whether receiving daily updates or a full extract.

### *Daily Bulk Tape Process*

Database triggers monitor the RSS database for changes to bulk tape related data records during daily processing at the CRO.

This process records the company number associated with the change and then each night a routine performs the daily extract based on those numbers.

All records relating to each company are output by this routine and the daily log cleared down for the next day.

### *Full Bulk Tape Process*

All companies on the database are cycled through and all related records for each company are output.

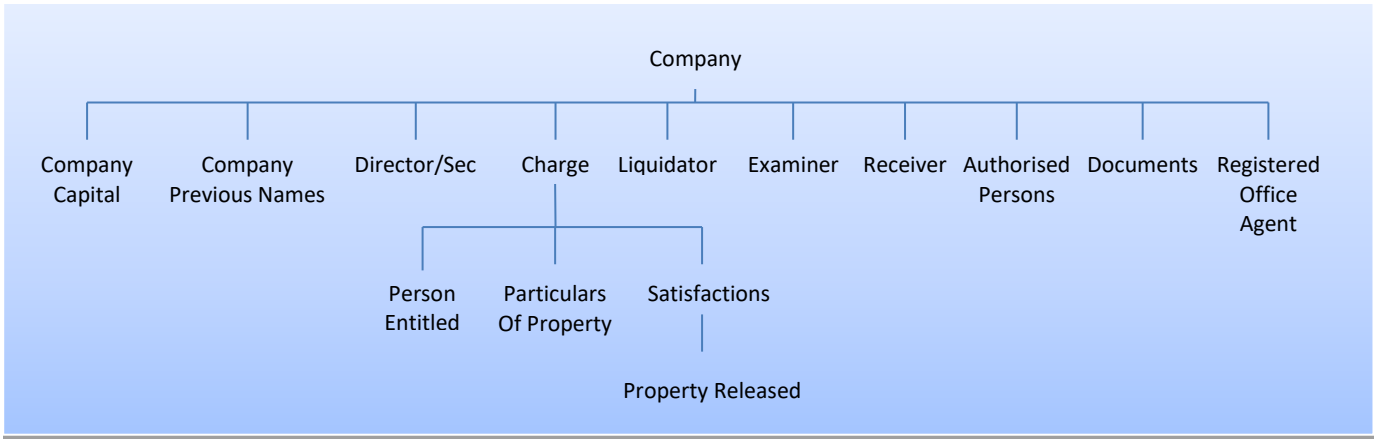
## 2. Bulk Tape File Format (V4.0)

The file consists of a number of different record types on varying composition and length. A record type indicator precedes each record type, e.g. a company record type starts with CS and a director secretary record type starts with CO. **The character set used is UTF-8.**

Fields are tilde (~) delimited. Where no value exists for a field nothing is output in the file. This can result in multiple tildes following each other (~~~).

Each company is processed in turn with all related records for each company being output before the next company starts. The record layout is as below.

Some records have coded values and the descriptions for these coded values are in a reference file also supplied.



For each company the related records are output as per the above tree diagram following the leaf structure from the top and working down from left to right.

The record type indicators for each record type are as follows:

Record Type	Record Type Indicator	Notes
Company	CS	Main company details - one record per company
Company Capital	CC	Share capital details – zero, one or more records per company (one record for each currency a company has shares in)
Company Previous Name	CN	Previous name details for a company – zero, one or more records per company.
Director/Sec	CO	Director/ Secretary details for a company – zero, one or more records per company.
Charge	CH	Charge details for a company – zero, one or more records per company.
Person Entitled	PE	Person entitled to a charge details – zero, one or more records per charge.
Particulars of Property	PP	Particulars of property details for a charge - zero, one or more records per charge.
Satisfactions	SR	Satisfaction Details for a charge - zero, one or more records per charge.
Property Released	PR	Property Released details for a satisfaction - zero, one or more records per satisfaction.
Liquidator	LR	Liquidator details for a company - zero, one or more records per company.
Examiner	EX	Examiner details for a company - zero, one or more records per company.
Receiver	RC	Receiver details for a company - zero, one or more records per company.
Authorised Person	AP	Authorised Person details for a company - zero, one or more records per company.
Document	DR	Document details for a company - zero, one or more records per company.
Registered Office Agent	RO	Authorised registered office agents
Registered Office Agent Link	RL	Registered Office Agent Details for a company – zero, one or more records per company

The tables on the following pages provide detailed descriptions of each record type:

**Record Type : CS (Company)**

No.	Field Description	Length	Data Type	Format	Content	Notes
1	Record_Type	2	Char		CS	Record type indicator
2	Company_Num	7	Number			
3	Company_Name	400	Char			
4	Company_Keyword_1	25	Char			First 25 Characters Minus spaces in Company name
5	Company_Status_Code	4	Number			Designation - See Company Status Codes
6	Company_Type_Code	4	Number			See Company Type Codes
7	Princ_Object_Code	10	Char			See Principle Object Codes
8	Company_Reg_Date	10	Date	DD/MM/YYYY		
9	Last_Ar_Date	10	Date	DD/MM/YYYY		
10	Company_Address_1	800	Char			
11	Company_Address_2	800	Char			
12	Company_Address_3	800	Char			
13	Company_Address_4	800	Char			
14	Town_Code	6	Number			See Town Codes
15	Comp_Dissolved_Date	10	Date	DD/MM/YYYY		
16	Bond_Expiry_Date	10	Date	DD/MM/YYYY		
17	NARD	10	Date	DD/MM/YYYY		Next Annual Return Date
18	Last_Accounts_date	10	Date	DD/MM/YYYY		The latest 'account to' date for the company
19	Company Status date	10	Date	DD/MM/YYYY		If the status of the company is not "Normal" then the effective date of the status will be out put here, otherwise it will be blank.
20	Nace_v2_code	5	Char			Nace Version 2 code
21	Roa_id	8	Number			Registered Office Agent ID.
22	Eircode	10	Char			Eircode Designation
23	Company_Name_Eff_Date	10	Date	DD/MM/YYYY		To identify the effective date of the company name .
24	Company_Type_Eff_Date	10	Date	DD/MM/YYYY		To identify the effective date of the company type .

**Record Key :** Record\_Type  
Company\_Num

**Record Type :** CC (Company Capital)

No.	Field Description	Length	Data Type	Format	Content	Notes
1	Record Type	2	Char		CC	Record type indicator
2	Company_Num	7	Number			
3	Currency_Code	3	Number			See currency codes
4	Authorised_Amount	15,4	Number			
5	Amount_Issued	15,4	Number			

**Record Key :** Record\_Type  
Company\_Num  
Currency Code

**Record Type :** CN (Company Previous Names)

No.	Field Description	Length	Data Type	Format	Content	Notes
1	Record Type	2	Char		CN	Record type indicator
2	Company_Num	7	Number			
3	Prev_Company_Name_Num	3	Number			
4	Company_Previous_Name	400	Char			
5	Previous_Name_Effective_Date	10	Date	DD/MM/YYYY		
6	Previous_Name_Keyword_1	25	Char			First 25 Characters Minus spaces in Company name

**Record Key :** Record\_Type  
Company\_Num  
Prev\_Company\_Name\_Num



**Record Type :** CO (Director/Sec)

No.	Field Description	Length	Data Type	Format	Content	Notes
1	Record Type	2	Char		CO	Record type indicator
2	Company_Num	7	Number			
3	Person_Type	1	Char			D = Director, S = Secretary
4	Person_Name	400	Char			Can contain company / Business name instead of person name if secretary is a company / business name
5	Person_Address_1	800	Char			
6	Person_Address_2	800	Char			
7	Person_Address_3	800	Char			
8	Person_Address_4	800	Char			
9	Person_Date_Of_Birth	10	Date	DD/MM/YYYY		If company or business name then contains reg. date
10	Person_Num	7	Number			person number, company number or business name number as indicated in 14 below.
11	From_Date	10	Date	DD/MM/YYYY		Start date of appointment
12	To_Date	10	Date	DD/MM/YYYY		End date of appointment, null if dir/sec is current
13	Person Type Indicator	1	Char			P=person, C= company, B= Business Name
14	Rel_Type_Code	5	Number			Identifies the relationship type – See Relationship Type codes
15	Person_Address_5	50	Char			Will Not Be Populated
16	Eircode	10	Char			Eircode Designation

**Record Key :** No unique key

**Record Type : CH (Charge)**

No.	Field Description	Length	Data Type	Format	Content	Notes
1	Record Type	2	Char		CH	Record type indicator
2	Company_Num	7	Number			
3	Charge_Num	5	Number			
4	Charge_Type_Description	4000	Char			
5	Charge_Registered_Date	10	Date	DD/MM/YYYY		
6	Charge_Created_Date	10	Date	DD/MM/YYYY		
7	Property_Acquired_Date	10	Date	DD/MM/YYYY		
8	Amount_Secured	14,2	Number			
9	Currency_Code	3	Number			
10	Amount_Secured_Details	4000	Char			
11	Charge_Status_Code	5	Number			See Charge Status Codes
12	Sub_Num	9	Char			
13	Fur_Parts_Ind	1	Char			Indicates if further particulars are attached to the charge 'Y' indicates if further particulars are attached to the charge
14	Interest_Ind	1	Char			'Y' or 'N' to indicate if interest is charged
15	C1a_link	8	Number			The submission link reference to a c1a
16	Charge_Rec_Date	19	Date	DD/MM/YYYY HH:MI:SS		Date & time (Hrs:Min:Sec) the Charge was received by the CRO

**Record Key :** Record\_Type  
Company\_Num  
Charge\_Num

**Record Type : PE (Person Entitled)**

No.	Field Description	Length	Data Type	Format	Content	Notes
1	Record Type	2	Char		PE	Record type indicator
2	Company_Num	7	Number			
3	Charge_Num	5	Number			
4	Charge_Rel_Type_Code	5	Number			See Charge Relation Type Codes
5	Charge_Party_Name	400	Char			
6	Charge_Party_addr_1	800	Char			
7	Charge_Party_addr_2	800	Char			
8	Charge_Party_addr_3	800	Char			
9	Charge_Party_addr_4	800	Char			
10	Eircode	10	Char			Eircode Designation

**Record Key :** No unique key

**Record Type : PP (Particulars of Property)**

No.	Field Description	Length	Data Type	Format	Content	Notes
1	Record Type	2	Char		PP	Record type indicator
2	Company_Num	7	Number			
3	Charge_Num	5	Number			
4	Property_Num	2	Number			
5	Property_Description	4000	Char			

**Record Key :** Record\_Type  
Company\_Num  
Charge\_Num  
Property\_Num

**Record Type : SR (Satisfactions)**

No.	Field Description	Length	Data Type	Format	Content	Notes
1	Record Type	2	Char		SR	Record type indicator
2	Company_Num	7	Number			
3	Charge_Num	5	Number			
4	Satisfaction_Num	5	Number			
5	Satisfaction_Type_Code	2	Number			See Satisfaction Type Codes
6	Satisfaction_Date	10	Date	DD/MM/YYYY		
7	Satisfaction_Notes	100	Char			Will not be populated
8	Satisfaction_Status	4	Char		UNK, INT, REG, OBJ	UNK=Unknown, INT = Interim, REG=Registered, OBJ=Objection Received
9	Sub_Num	9	Char			

**Record Key :** Record\_Type  
Company\_Num  
Charge\_Num  
Satisfaction\_Num

**Record Type : PR (Property Released)**

No.	Field Description	Length	Data Type	Format	Content	Notes
1	Record Type	2	Char		PR	Record type indicator
2	Company_Num	7	Number			
3	Charge_Num	5	Number			
4	Satisfaction_Num	5	Number			
5	Property_Release_Num	2	Number			
6	Property_Release_Desc	2000	Char			

**Record Key :** Record\_Type  
Company\_Num  
Charge\_Num  
Satisfaction\_Num  
Property\_Release\_Num

**Record Type : LR (Liqr)**

No.	Field Description	Length	Data Type	Format	Content	Notes
1	Record Type	2	Char		LR	Record type indicator
2	Company_Num	7	Number			
3	Liquidator_Name	400	Char			
4	Liquidator_Addr_1	800	Char			
5	Liquidator_Addr_2	800	Char			
6	Liquidator_Addr_3	800	Char			
7	Liquidator_Addr_4	800	Char			
8	Liquidator_Appoint_Date	10	Format	DD/MM/YYYY		
9	Liquidator_Ceasing_Date	10	Format	DD/MM/YYYY		
10	Person_Num	7	Number			person number, company number or business name number as indicated in 12 below.
11	Liquidator Type Indicator	1	Char			P=person, C= company, B= Business Name
12	Rel_Type_Code	5	Number			Identifies the relationship type – See Relationship Type codes
13	Eircode	10	Char			Eircode Designation

**Record Key :** No unique key

**Record Type : EX (Examiner)**

No.	Field Description	Length	Data Type	Format	Content	Notes
1	Record Type	2	Char		EX	Record type indicator
2	Company_Num	7	Number			
3	Examiner_Name	400	Char			
4	Examiner_Addr_1	800	Char			
5	Examiner_Addr_2	800	Char			
6	Examiner_Addr_3	800	Char			
7	Examiner_Addr_4	800	Char			
8	Examiner_Appoint_Date	10	Date	DD/MM/YYYY		
9	Examiner_Ceasing_Date	10	Date	DD/MM/YYYY		
10	Person_Num	7	Number			person number, company number or business name number as indicated in 12 below.
11	Examiner Type Indicator	1	Char			P=person, C= company, B= Business Name
12	Rel_Type_Code	5	Number			Identifies the relationship type – See Relationship Type codes
13	Eircode	10	Char			Eircode Designation

**Record Key :** No unique key

**Record Type : RC (Recvr)**

No.	Field Description	Length	Data Type	Format	Content	Notes
1	Record Type	2	Char		RC	Record type indicator
2	Company_Num	7	Number			
3	Receiver_Name	400	Char			
4	Receiver_Addr_1	800	Char			
5	Receiver_Addr_2	800	Char			
6	Receiver_Addr_3	800	Char			
7	Receiver_Addr_4	800	Char			
8	Receiver_Appoint_Date	10	Date	DD/MM/YYYY		
9	Receiver_Ceasing_Date	10	Date	DD/MM/YYYY		
10	Person_Num	7	Number			person number, company number or business name number as indicated in 12 below.
11	Receiver Type Indicator	1	Char			P=person, C= company, B= Business Name
12	Rel_Type_Code	5	Number			Identifies the relationship type – See Relationship Type codes
13	Eircode	10	Char			Eircode Designation

**Record Key :** No unique key

**Record Type : AP (Authorised Person)**

No.	Field Description	Length	Data Type	Format	Content	Notes
1	Record Type	2	Char		AP	Record type indicator
2	Company_Num	7	Number			
3	Authorised_Person_Name	400	Char			
4	Authorised_Person_Addr_1	800	Char			
5	Authorised_Person_Addr_2	800	Char			
6	Authorised_Person_Addr_3	800	Char			
7	Authorised_Person_Addr_4	800	Char			
8	Authorised_Person_Appoint_Date	10	Date	DD/MM/YYYY		
9	Authorised_Person_Ceasing_Date	10	Date	DD/MM/YYYY		
10	Person_Num	7	Number			Person number, company number or business name number as indicated in 12 below.
11	Authorised_Person Type Indicator	1	Char			P=person, C= company, B= Business Name
12	Rel_Type_Code	5	Number			Identifies the relationship type – See Relationship Type codes
13	Eircode	10	Char			Eircode Designation

**Record Key :** No unique key

**Record Type : DR (Documents)**

No.	Field Description	Length	Data Type	Format	Content	Notes
1	Record Type	2	Char		DR	Record type indicator
2	Company_Num	7	Number			
3	Submission_Num	9	Char			
4	Sub_Document_Num	9	Number			
5	Submission_Type_Code	5	Number			See Submission Type Codes
6	Document_Type_Code	5	Number			See Document Type Codes
7	Submission_Rec_Date	10	Date	DD/MM/YYYY		Receive Date of Submission
8	Submission_Eff_Date	10	Date	DD/MM/YYYY		Effective Date of Submission
9	Submission_Status	5	Number			See Submission Status Codes
10	FileNet_Document_Id	15	Number			
11	Accounts_To_Date	10	Date	DD/MM/YYYY		The “accounts to date” of an annual return. Will appear on annual return and account document record types
12	Submission_Reg_Date	10	Date	DD/MM/YYYY		Registered Date of Submission
13	Auditor_Reg_No	20	Char			Auditor Registration No.

--	--	--	--	--	--	--

**Record Key :** Record\_Type  
Company\_Num  
Submission\_Num  
Sub\_Document\_Num

**Record Type :** RO (Registered Office Agent)

No.	Field Description	Length	Data Type	Format	Content	Notes
1	Record Type	2	Char		RO	Record type indicator
2	Roa_id	8	Number			Id of the registered office agent
3	Company_Num	7	Number			Company number of the authorised ROA
4	ROA_eff_date	10	Date	DD/MM/YYYY		Date from which the company was authorised to act as an ROA

**Record Key :** Roa\_id

**Record Type :** RL (Registered Office Agent Link)

No.	Field Description	Length	Data Type	Format	Content	Notes
1	Record Type	2	Char		RL	Record type indicator
2	Company_Num	7	Number			Company that is using the ROA
3	Company_Name	400	Char			Name of Registered Office Agent (company name)
4	Company_Address_1	800	Char			Address of Registered Office Agent
5	Company_Address_2	800	Char			Address of Registered Office Agent
6	Company_Address_3	800	Char			Address of Registered Office Agent
7	Company_Address_4	800	Char			Address of Registered Office Agent
8	Company_Address_5	800	Char			Address of Registered Office Agent
9	Company_Reg_Date	10	Date	DD/MM/YYYY		Registered Date of Registered Office Agent Company
10	Eircode	10	Char			Eircode of Registered Office Agent
11	ROA_Company_Num	7	Number			The number of the company that is offering the Registered Office service
12	From_Date	10	Date	DD/MM/YYYY		Start date of appointment
13	To_Date	10	Date	DD/MM/YYYY		End date of appointment, null if roa is current
14	Rel_Type_Code	5	Number			Identifies the relationship

						type – See Relationship Type codes
--	--	--	--	--	--	---------------------------------------

**Record Key :** No unique key



### 3. Bulk Tape Reference Data

A separate file is provided which details the current values for any coded values in the main bulk tape file.

This file also consists of a number of different record types on varying composition and length. A record type indicator precedes each record type

The file is tilde(~) delimited and contains the following record types:

Record Type	Record Type Indicator
Company Status	CS
Company Type	CT
Principle Object	PO
Town Codes	TC
Currency	CC
Charge Status	CH
Charge Relation Type	CR
Satisfaction Type	ST
Submission Type	SB
Document Type	DT
Submission Status	SS
Relationship Type	RT
Nace Version 2 Type	NA
Registered Office Agents	RA

#### Record Type : CS (Company Status)

No.	Field Description	Length	Data Type	Format	Content	Notes
1	Record Type	2	Char		CS	Record type indicator
2	Company_Status_Code	4	Number			
3	Company_Status_Desc	100	Char			

#### Record Type : CT (Company Type)

No.	Field Description	Length	Data Type	Format	Content	Notes
1	Record Type	2	Char		CT	Record type indicator
2	Company_Type_Code	4	Number			
3	Company_Type_Desc	100	Char			

**Record Type : PO (Principle Object)**

No.	Field Description	Length	Data Type	Format	Content	Notes
1	Record Type	2	Char		PO	Record type indicator
2	Princ_Obj_Code	10	Char			
3	Princ_Obj_Desc	80	Char			

**Record Type : TC (Town Codes)**

No.	Field Description	Length	Data Type	Format	Content	Notes
1	Record Type	2	Char		TC	Record type indicator
2	Town_Code	6	Number			
3	Town_Code_Desc	30	Char			

**Record Type : CC (Currency)**

No.	Field Description	Length	Data Type	Format	Content	Notes
1	Record Type	2	Char		CC	Record type indicator
2	Currency_Code	3	Char			
3	Currency_Code_Desc	20	Char			

**Record Type : CH (Charge Status)**

No.	Field Description	Length	Data Type	Format	Content	Notes
1	Record Type	2	Char		CH	Record type indicator
2	Charge_Status_Code	5	Number			
3	Charge_Status_Desc	20	Char			

**Record Type : CR (Charge Relation)**

No.	Field Description	Length	Data Type	Format	Content	Notes
1	Record Type	2	Char		CR	Record type indicator
2	Chg_Rel_Type_Code	5	Number			
3	Chg_Rel_Type_Desc	20	Char			

**Record Type : ST (Satisfaction Type)**

No.	Field Description	Length	Data Type	Format	Content	Notes
1	Record Type	2	Char		ST	Record type indicator
2	Satisfaction_Type_Code	2	Number			
3	Satisfaction_Type_Desc	20	Char			

**Record Type : SB (Submission Type)**

No.	Field Description	Length	Data Type	Format	Content	Notes
1	Record Type	2	Char		SB	Record type indicator
2	Submission_Type_Code	5	Number			
3	Submission_Type_Desc	100	Char			
4	Sub_Type_Long_Desc	150	Char			Not Being Populated

**Record Type : DT (Document Type)**

No.	Field Description	Length	Data Type	Format	Content	Notes
1	Record Type	2	Char		CS	Record type indicator
2	Document_Type_Code	5	Number			
3	Document_Type_Desc	100	Char			
4	Doc_Type_Long_Desc	150	Char			Not Being Populated

**Record Type : SS (Submission Status)**

No.	Field Description	Length	Data Type	Format	Content	Notes
1	Record Type	2	Char		SS	Record type indicator
2	Sub_Status_Code	5	Number			
3	Sub_Status_Desc	100	Char			

**Record Type : RT (Relationship Type)**

No.	Field Description	Length	Data Type	Format	Content	Notes
1	Record Type	2	Char		RT	Record type indicator
2	Rel_Type_Code	5	Number			
3	Rel_Type_Desc	100	Char			

**Record Type : NA (Nace Version 2 Type)**

No.	Field Description	Length	Data Type	Format	Content	Notes
1	Record Type	2	Char		NA	Record type indicator
2	Element_Code	5	Char			
3	Element_Description	150	Char			

**Record Type : RA (Registered Office Agents)**

No.	Field Description	Length	Data Type	Format	Content	Notes
1	Record Type	2	Char		RA	Record type indicator
2	ROA_Id	8	Number			Unique Identifier
3	Company_Number	7	Number			Company acting as registered office
4	Company_Bus_Ind	1	Char			'C' for Company
5	Eff_From_Date	10	Date	DD/MM/YYYY		Date of appointment
6	Eff_To_Date	10	Date	DD/MM/YYYY		

### 3. Amendments List

No.	Group		Comment
1	CT Company Type	Company_Type_Desc	Size adjusted from 50 to 80 Char
2		Company Name	Size adjusted from 110 to 150 Char
3	Addition of Registered Office Agent RO		
4	Addition of Registered Office Agent Link RL		
5	CS (Company)	Addition of Nace_v2_code	
6	CS (Company)	Addition of Roa_id	
7	CS (Company)	Addition of Eircode	
8	CO (Director/Sec)	Addition of Eircode	
9	CO (Director/Sec)	Person Name now 150 char	
10	CH (Charge)	Addition of C1a_link	
11	CH (Charge)	Addition of Charge_Rec_Date	
12	PE (Person_Entitled_)	Addition of Eircode	
13	LR (Liqr)	Addition of Eircode	
14	LR (Liqr)	Liquidator Name now 150 char	
15	EX (Examiner)	Addition of Eircode	
16	EX (Examiner)	Examiner_Name now 150 char	
17	RC (Recvr)	Addition of Eircode	
18	RC (Recvr)	Receiver_Name now 150 char	
19	AP (Authorised_Person)	Addition of Eircode	
20	AP (Authorised_Person)	Authorised_Person_Name now 150 char	
21	Bulk Tape Reference Data	Addition of NACE Version 2 Type (NA)	
22	Bulk Tape Reference Data	Addition of Registered Office Agents (RA)	List of Registered Office Agents
23	PE (Person Entitled)	Charge_Party_Name	Size adjusted from 130 to 150 Char

#### 4. Amendments List 4.3

No.	Group		Comment
1	CS (Company)	Added Company_Name_Eff_Date field (in CS company section)	Date format DD/MM/YYYY
2	CS (Company)	Added Company_Type_Eff_Date field (in CS company section)	Date format DD/MM/YYYY

#### 5. Amendments List 4.4

No.	Group		Comment
1	CS (Company)	Increased Company_Name from 150 to 400	
2	CS (Company)	Company_Keyword_1 – formula behind calculation changed	First 25 Characters in the Company name minus any spaces.
3	CS (Company)	Increased Company_Status_Code from 2 to 4	
4	CS (Company)	Increased Company_Type_Code from 2 to 4	
5	CS (Company)	Increased Company_Address_1 from 50 to 800	
6	CS (Company)	Increased Company_Address_2 from 50 to 800	
7	CS (Company)	Increased Company_Address_3 from 50 to 800	
8	CS (Company)	Increased Company_Address_4 from 50 to 800	
9	CC (Company Capital)	Increase Authorised_Amount from 14,2 to 15,4	
10	CC (Company Capital)	Increase Amount_Issued from 14,2 to 15,4	
11	CN (Company Previous Names)	Increase Company_Previous_Name from 110 to 400	

12	CN (Company Previous Names)	Previous_Name_Keyword_1 formula behind calculation changed	First 25 Characters in the Company_Previous_Name minus any spaces.
13	CO (Director/Sec)	Increased Person_Name from 150 to 400	
14	CO (Director/Sec)	Increased Person_Address_1 from 50 to 800	
15	CO (Director/Sec)	Increased Person_Address_2 from 50 to 800	
16	CO (Director/Sec)	Increased Person_Address_3 from 50 to 800	
17	CO (Director/Sec)	Increased Person_Address_4 from 50 to 800	
18	CO (Director/Sec)	Increased Rel_Type_Code from 3 to 5	
19	CO (Director/Sec)	Person_Address_5	Will not be populated
20	CH (Charge)	Charge_Status_Code increased from 2 to 5	
21	PE (Person Entitled)	Charge_Rel_Type_Code increased from 2 to 5	
22	PE (Person Entitled)	Increased Charge_Party_Name from 150 to 400	
23	PE (Person Entitled)	Increased Charge_Party_Addr_1 from 50 to 800	
24	PE (Person Entitled)	Increased Charge_Party_Addr_2 from 50 to 800	
25	PE (Person Entitled)	Increased Charge_Party_Addr_3 from 50 to 800	
26	PE (Person Entitled)	Increased Charge_Party_Addr_4 from 50 to 800	
27	PP (Particulars of Property)	No change in format	
28	SR (Satisfactions)	Satisfaction_Notes	Will not be populated
29	LR (Liqr)	Increased Liquidator_Name from 150 to 400	
30	LR (Liqr)	Increased Liquidator_Addr_1 from 50 to 800	
31	LR (Liqr)	Increased Liquidator_Addr_2 from 50	

		to 800	
32	LR (Liqr)	Increased Liquidator_Addr_3 from 50 to 800	
33	LR (Liqr)	Increased Liquidator_Addr_4 from 50 to 800	
34	LR (Liqr)	Rel_Type_Code increased from 2 to 5	
35	EX (Examiner)	Increased Examiner_Name from 150 to 400	
36	EX (Examiner)	Increased Examiner_Addr_1 from 50 to 800	
37	EX (Examiner)	Increased Examiner_Addr_2 from 50 to 800	
38	EX (Examiner)	Increased Examiner_Addr_3 from 50 to 800	
39	EX (Examiner)	Increased Examiner_Addr_4 from 50 to 800	
40	EX (Examiner)	Rel_Type_Code increased from 2 to 5	
41	RC(Recvr)	Increased Receiver_Name from 150 to 400	
42	RC(Recvr)	Increased Receiver_Addr_1 from 50 to 800	
43	RC(Recvr)	Increased Receiver_Addr_2 from 50 to 800	
44	RC(Recvr)	Increased Receiver_Addr_3 from 50 to 800	
45	RC(Recvr)	Increased Receiver_Addr_4 from 50 to 800	
46	RC(Recvr)	Rel_Type_Code increased from 2 to 5	
47	AP (Authorised Person)	Increased Authorised_Person_Name from 150 to 400	
48	AP (Authorised Person)	Increased Authorised_Person_Addr_1 from 50 to 800	
49	AP (Authorised Person)	Increased Authorised_Person_Addr_2 from 50 to 800	

50	AP (Authorised Person)	Increased Authorised_Person_Addr_3 from 50 to 800	
51	AP (Authorised Person)	Increased Authorised_Person_Addr_4 from 50 to 800	
52	AP (Authorised Person)	Rel_Type_Code increased from 2 to 5	
53	DR (Documents)	Submission Number is changed from a number to a char of size 8.	
54	DR (Documents)	Sub_Document_Num is increased to 9 in size.	
55	DR (Documents)	Submission_Type_Code from 4 to 5	
56	DR (Documents)	Submission_Status from 3 to 5	
57	RL (Registered Office Agent Link)	Increased Company_Name from 150 to 400	
58	RL (Registered Office Agent Link)	Increased Company_Addr_1 from 50 to 800	
59	RL (Registered Office Agent Link)	Increased Company_Addr_2 from 50 to 800	
60	RL (Registered Office Agent Link)	Increased Company_Addr_3 from 50 to 800	
61	RL (Registered Office Agent Link)	Increased Company_Addr_4 from 50 to 800	
62	RL (Registered Office Agent Link)	Rel_Type_Code increased from 2 to 5	
63	CS (Company Status)	Company_Status_Code increased from 2 to 4	
64	CS (Company Status)	Company_Status_Desc increased from 20 to 100	
65	CT (Company Type)	Company_Type_Code increased from 2 to 4	
66	CT (Company Type)	Company_Type_Desc increased from 20 to 100	
67	CH (Charge Status)	Charge_Status_Code increased from 2 to 5	
68	CR (Charge Relation)	Chg_Rel_Type_Code increased from 2 to 5	
69	SB (Submission Type)	Submission_Type_Desc increased from 50 to 100	
70	SB (Submission Type)	Sub_Type_Long_Desc	Will not be populated
71	DT (Document Type)	Document_Type_Desc increased from 50 to 100	
72	DT (Document Type)	Doc_Type_Long_Desc	Will not be populated



73	SS (Submission Status)	Sub_Status_Code increased from 3 to 5	
74	SS (Submission Status)	Sub_Status_Desc increased from 20 to 100	
75	RT (Relationship Type)	Rel_Type_Code increased from 3 to 5	
76	RT (Relationship Type)	Rel_Type_Desc increased from 20 to 100	
77	(CH) Charge	Sub_Num Size increased from 8 to 9	
78	(SR) Satisfaction	Sub_Num Size increased from 8 to 9	
79	(DR) Documents	Submission_Num Size increased from 8 to 9	
80	(SR) Satisfaction	Satisfaction_Num Size increased from 4 to 5	
81	(PR) Property Released	Satisfaction_Num Size increased from 4 to 5	